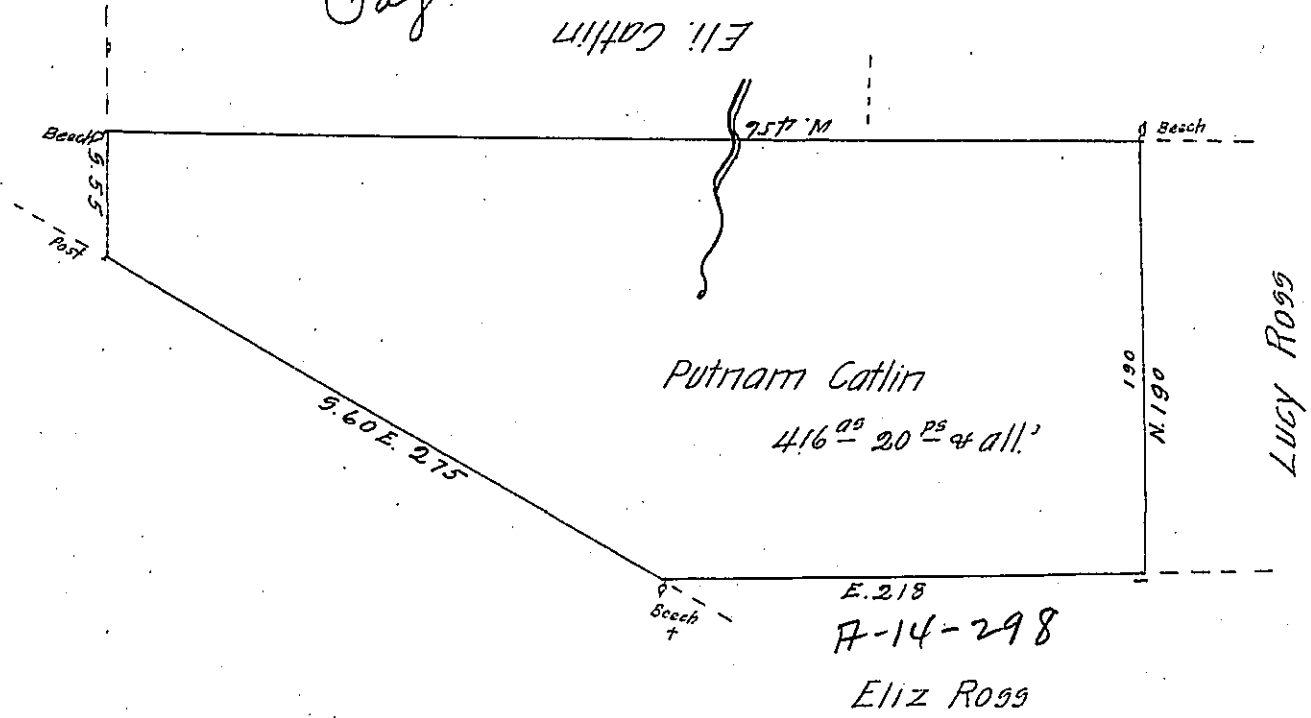


Page 18



By Virtue of a Warrant dated 20<sup>th</sup> Aug<sup>t</sup> 1792 surveyed the 5<sup>th</sup>  
of August 1793. Unto Putnam Catlin the above described Tract of Four hun-  
dred and sixteen Acres & 20 perches & All<sup>s</sup> of Land situated on a small  
branch of Sugar Creek in Luzern County

By W<sup>m</sup> Montgomery D.G.

To Daniel Brodhead Esq<sup>r</sup> }  
Survey<sup>r</sup> Gen<sup>l</sup> of Penn<sup>a</sup> }  
} }  
} }

Jo. J. Wallis D.G.

31

IN TESTIMONY that the above is a copy of the original remaining on file in  
the Department of Internal Affairs of Pennsylvania, made  
conformably to an Act of Assembly approved the 16th day of  
February, 1833, I have hereunto set my Hand and caused  
the Seal of said Department to be affixed at Harrisburg,  
this Sixth day of June 1904

*George B. Brown*  
Secretary of Internal Affairs.